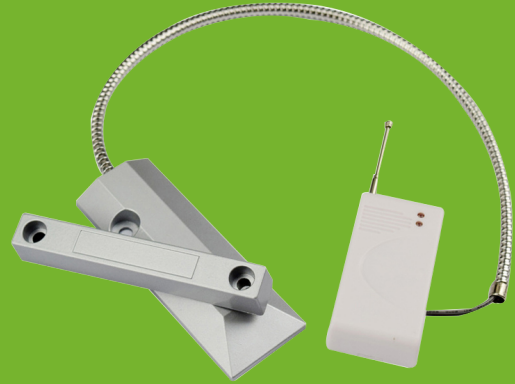


Recessed magnetic door sensor



MC-SK03W-2 (315MHz Or 433MHz)

What is Magnetic Reed Switch?

The reed switch is an electrical switch operated by an applied magnetic field. ...

The switch may be actuated by an electromagnetic coil, making a reed relay, or by bringing a permanent magnet near it.

When the magnetic field is removed, the contacts in the reed switch return to their original position.

What are magnetic reed switches used for?

A reed switch is an electromagnetic switch used to control the flow of electricity in a circuit.

They are made from two or more ferrous reeds encased within a small glass tube-like envelope, which become magnetised and move together or separate when a magnetic field is moved towards the switch.

Specifications

Working voltage:	12V23A battery
Quiescent current:	<=1.5uA
Alarm current:	<=10mA
Separation threshold:	3.5cm
Transmitting frequency:	315/433MHZ
Coding method:	1527 (learning code)
Transmitting distance:	40 meters
Installation method:	screw fixed
Applicable scenarios:	installed on rolling gates or iron gates

Product Details

